

LABOGA users



Vader



Zbyszek Krebs



The Old Dead Tree



Manu Savu



Return To Reason



Annihilator



Dagoba



Jan Borysewicz



Tommy Emmanuel



Horea Crisovan



Hate Eternal



Jarek Smietana



Black Bomb A



Wojciech Waglewski



Al Di Meola



Behemoth



The Rasmus



Amon Din



Paul Dianno Band



Illdisposed

Paul Ciuci - Compact Tree Michael Brettner Don Alder Destiny Jonathan Kreisberg Raunchy Kulik Adrian "Qlos" Rob Tognoni Antfarm Studio Shadows Land Mana Recording TrendKill Method 37 Stabwoundz Andrzej Urny Lukasz Gorkczyca No Heaven Awaits Us Benoit Pol Gilad Hekselman Manny Charlton Parricide So i Sin Spoil Engine Leszek Cichonski Ataraxie / Wormfood / Funeralium Pearson Gareth Jurek Styczynski Mietek Jurecki Sygutowicz Marek Raduli Orphan Hate The Vision Bleak [D]ekaden[z] Slit - Omar Grech Partyzant AC SWR - Fest and many more great musicians...

LABOGA

www.labogaamps.com

Manufactory

Str. Partyzantów 35/2
Wrocław 51-675
Poland
(0)713484431

**LABOGA
CABLES**

www.labogacables.com



LABOGA
35th Anniversary

Endorsers for

LABOGA

Thanks for your interest.

Since 1973 I have offered highest quality tube guitar amplifiers, enclosures, and music accessories. Everything is hand made starting from the smallest elements. All of our products are checked in detail before you get them. It all started when I was sixteen in 1968. I found a rock band, where I used to play the guitar. After some time, we needed the PA system and at the same time I started to study electronics and was very interested in power amplifiers. I decided to make my own guitar amplifier, which was my first construction.

It occurred very quickly that producing power amplifiers was my better side than playing the guitar. The band broke up and I have started my adventure with Tube Guitar amplifiers.

Our long-term trade presence lets us understand what are the musicians' needs. We can also learn what changes are needed in our constructions in order to satisfy our customer's.

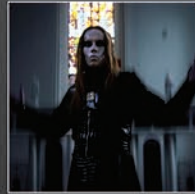
I hope you will enjoy our catalogue.

For more information please check our website www.labogaamps.com

Kindest Regards

Adam Laboga

Adam Laboga



Behemoth



ALLDISPOSED



VADER



Dagoba



In the End



While designing Mr. Hector amplifier we were thinking about guitar players who usually lack gain.

Data :

- output power: 100/50 W (overswitched),
- tubes: 4 x 6L6, 4 x 12AX7, 2 x 5C3S,
- two channels: clean and distortion,
- high and low input,
- volume regulators - clean channel, gain and volume - distortion channel,
- two separate positions, switched with footswitch, Master Volume regulators,
- common tone regulation for both channels with mid Switch,
- channel switching on relays,
- separate bright switch for each channel,
- footswitch socket: channels switching and Master Volume,
- series effect loop,
- line level Direct Output with speaker simulation,
- speaker outputs: 1 x 4 ohm, 2 x 8 ohm, 2 x 16 ohm,
- dimensions (width x depth x height): 690 x 268 x 250.

Special Edition

camouflage
white
red
snake skin



ANNIHILATOR



We would like to introduce the Laboga "ANNIHILATOR" -Mr.Hector hi gain amplifier (Jeff Waters Signature Series) Special custom made for Jeff Waters.

It's the same sound of the Mr.Hector amp but with extra effect loop on the drive channel.

Data:

- output power: 100/50 W (overswitched),
- tubes: 4 x 6L6, 4 x 12AX7, 2 x 5C3S,
- two channels: clean and distortion,
- high and low input,
- volume regulators - clean channel, gain and volume - distortion channel,
- two separate positions, switched with footswitch, Master Volume regulators,
- common tone regulation for both channels with mid Switch,
- channel switching on relays,
- separate bright switch for each channel,
- footswitch socket: channels switching and Master Volume,
- separate series effect loop for both channel,
- line level Direct Output with speaker simulation,
- speaker outputs: 1 x 4 ohm, 2 x 8 ohm, 2 x 16 ohm,
- dimensions (width x depth x height): 690 x 268 x 250

Many people have been asking my friends at Laboga and myself about why I requested to have separate fx send/returns on my killer Laboga Mr. Hector Annihilator model.

Every club, hall, theatre and arena all have the potential to have bad grounding or be situated near a power station, power lines or other interferences. This can and often ends up driving guitarists and crews crazy when the result is a huge hum or buzz through the guitar rig! I would say, from my experience touring the world since 1989, that more than 50% of the venues out there have problems with this.

Since I run two different tones out of my Laboga amps, clean and dirty channels, I need to be able to adjust the noise gate differently between the 2 channels. Clean usually does not require much gating whereas the powerful, loud and distorted dirty channel will always need to be more clamped down (more heavily gated).

I needed a separate fx send/return for other reasons, too. I like a delay/chorus unit on my clean sound but not on my dirty, so the separate returns let me do this. Same with compression. I like compression on my clean tone to help smooth out inconsistent picking but I don't want any on my dirty channel.

So there you go. Having only one fx send/return means that any fx, gating and/or compression will be applied to both your clean and dirty channels. With my Laboga Mr. Hector Annihilator model, you have complete and independent control over your rock or metal tone and your clean channel!

Jeff Waters



Creating your sound

Mr.Hector - 35th Anniversary

Data :

- output power: 100/50 W (switched),
- tubes: 4 x 6L6WGC, 4 x 12AX7, 2 x 5C3S,
- two channels: clean and distortion,
- MIDI Input and regenerated signal MIDI Thru interface,
- high and low input,
- volume regulators - clean channel, gain and volume - distortion channel,
- two separate potentiometers - Master Volume regulators, switched with MIDI controller,
- common tone regulation for both channels with mid Switch,
- channel switching on relays,
- separate bright switch for each channel,
- MIDI changing parameters: channels switching, Master Volume pot switching, Muting, Effects Loop select,
- effects loop switching on relays,
- separate brightness for each channel,
- line level Direct Output with speaker simulation,
- speaker outputs: 2 x 4 ohm, 2 x 8 ohm, 1 x 16 ohm,
- dimensions (width x depth x height): 690 x 268 x 250



ALLIGATOR



Alligator AD5200 (single - head)

Data:

- output power: 50W.
- tubes used: 4 x EL84 and 2 x 12AX7.
- 2 channels: clear and overdrive.
- the same tone control for both channels.
- volume regulators - clear channel, gain and volume overdrive channel.
- two separate positions, switched with footswitch. Gain regulators.
- master volume.
- common tone regulation for both channels with EQ MOD.
- footswitch socket: channel and Gain 2 switching.
- footswitch socket: spring reverb and loop effect bypass.
- channel switching on relays.
- separate bright switches for both channels.
- series effect loop.
- spring reverb.
- line level Direct Outut witch speakers simulation.
- speaker outputs: 4 ohm, 8 ohm, 16 ohm.
- dimensions (width x deph x height): 675 x 280 x 265



Alligator AD5200 (twin - head)

Data:

- output power: 50W.
- tubes used: 4 x EL84 and 2 x 12AX7.
- 2 channels: clear and overdrive.
- two separate tone control for each channel clean and drive.
- volume regulators - clear channel, gain and volume overdrive channel.
- two separate positions, switched with footswitch. Gain regulators.
- master volume.
- common tone regulation for both channels with EQ MOD.
- footswitch socket: channel and Gain 2 switching.
- footswitch socket: spring reverb and loop effect bypass.
- channel switching on relays.
- separate bright switches for both channels.
- series effect loop.
- spring reverb.
- line level Direct Outut witch speakers simulation.
- speaker outputs: 4 ohm, 8 ohm, 16 ohm.
- dimensions (width x deph x height): 675 x 280 x 265

Alligator AD5201 (single - combo)

Data:

- output power: 50W.
- tubes used: 4 x EL84 and 2 x 12AX7.
- 2 channels: clear and overdrive.
- the same tone control for both channels.
- volume regulators - clear channel, gain and volume overdrive channel.
- two separate positions, switched with footswitch. Gain regulators.
- master volume.
- common tone regulation for both channels with EQ MOD.
- footswitch socket: channel and Gain 2 switching.
- footswitch socket: spring reverb and loop effect bypass.
- channel switching on relays.
- separate bright switches for both channels.
- series effect loop.
- spring reverb.
- line level Direct Outut witch speakers simulation.
- speaker outputs: 4 ohm, 8 ohm, 16 ohm.
- Celestion Vintage 30 loudspeaker.
- dimensions (width x deph x height): 495 x 270 x 465



Alligator AD5201 (twin - combo)

Data:

- output power: 50W.
- tubes used: 4 x EL84 and 2 x 12AX7.
- 2 channels: clear and overdrive.
- two separate tone control for each channel clean and drive.
- volume regulators - clear channel, gain and volume overdrive channel.
- two separate positions, switched with footswitch. Gain regulators.
- master volume.
- common tone regulation for both channels with EQ MOD.
- footswitch socket: channel and Gain 2 switching.
- footswitch socket: spring reverb and loop effect bypass.
- channel switching on relays.
- separate bright switches for both channels.
- series effect loop.
- spring reverb.
- line level Direct Outut witch speakers simulation.
- speaker outputs: 4 ohm, 8 ohm, 16 ohm.
- Celestion Vintage 30 loudspeaker.
- dimensions (width x deph x height): 495 x 270 x 465



Alligator AD5202 (single - combo)

Data:

- output power: 50W.
- tubes used: 4 x EL84 and 2 x 12AX7.
- 2 channels: clear and overdrive.
- the same tone control for both channels.
- volume regulators - clear channel, gain and volume overdrive channel.
- two separate positions, switched with footswitch. Gain regulators.
- master volume.
- common tone regulation for both channels with EQ MOD.
- footswitch socket: channel and Gain 2 switching.
- footswitch socket: spring reverb and loop effect bypass.
- channel switching on relays.
- separate bright switches for both channels.
- series effect loop.
- spring reverb.
- line level Direct Out with speakers simulation.
- speaker outputs: 4 ohm, 8 ohm, 16 ohm.
- 2 x Celestion Vintage 30 loudspeakers.
- dimensions (width x depth x height): 670 x 278 x 515

Alligator AD5202 (twin - combo)

Data:

- output power: 50W.
- tubes used: 4 x EL84 and 2 x 12AX7.
- 2 channels: clear and overdrive.
- two separate tone control for each channel clean and drive.
- volume regulators - clear channel, gain and volume overdrive channel.
- two separate positions, switched with footswitch. Gain regulators.
- master volume.
- common tone regulation for both channels with EQ MOD.
- footswitch socket: channel and Gain 2 switching.
- footswitch socket: spring reverb and loop effect bypass.
- channel switching on relays.
- separate bright switches for both channels.
- series effect loop.
- spring reverb.
- line level Direct Out with speakers simulation.
- speaker outputs: 4 ohm, 8 ohm, 16 ohm.
- 2 x Celestion Vintage 30 loudspeakers.
- dimensions (width x depth x height): 670 x 278 x 515



5202 Set and 5201 Set

There is the possibility of joining the amp with cabinet, thanks to the jack socket box in the cabinet with parallel connection. Additionally the dimensions of the Alligator cabinet are the same as in the Alligator combo model, what makes it possible to use as a bottom of the amp to reach even better sound.

Alligator AD5201 Class A (twin - combo)

Data :

- output power: 30/15 W (overswitched),
- tubes used: 4 x EL84 and 2 x 12AX7.
- 2 channels: clear and overdrive.
- two separate tone control for each channel clean and drive.
- volume regulators - clear channel, gain and volume overdrive channel.
- two separate positions, switched with footswitch. Gain regulators.
- master volume.
- common tone regulation for both channels with EQ MOD.
- footswitch socket: channel and Gain 2 switching.
- footswitch socket: spring reverb and loop effect bypass.
- channel switching on relays.
- separate bright switches for both channels.
- series effect loop.
- spring reverb.
- line level Direct Out with speakers simulation.
- speaker outputs: 4 ohm, 8 ohm, 16 ohm.
- Celestion GreenBack 30W Heritage Series
- dimensions (width x depth x height): 495 x 270 x 465

This amp is also available in Head version (AD5200 single or twin) and Combo 212 version with two speakers Celestion GreenBack 30W Heritage Series (AD5202 single or twin).

Single version is the same tone control for both channels.

Twin version is two separate tone control for each channel clean and drive.

ALLIGATOR

Alligator Cabinet Series

Cabinet - Alligator 5202 Single / Twin

Cabinet 2 x 12" in on two Celestion Vintage 30 speakers. The cabinet has the classical closed back, which is fixed on screws. The speakers are mounted at the back. The structure is available in plywood. Additionally the width and length of the cabinet is the same as in the Alligator AD5202 amplifier, what makes it possible to use as a bottom of the amp.

Data:

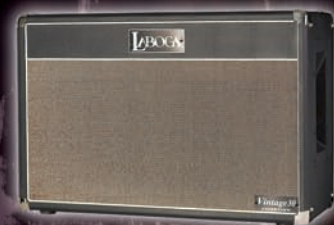
- Power: 120W RMS.
- 2 x Speaker Celestion Vintage 30
- Impedance: 4 ohm, 8 ohm or 16 ohm.
- Input: 2 - connected in a parallel.
- A possibility of fixing wheels.
- Dimensions (width x depth x height): 670 x 278 x 450

Cabinet - Alligator 5201 Single / Twin

Cabinet 1 x 12" in on one Celestion Vintage 30 speaker. The cabinet has the classical closed back, which is fixed on screws. The speaker is mounted at the back. The structure is available in plywood. Additionally the width and length of the cabinet is the same as in the Alligator AD5201 amplifier, what makes it possible to use as a bottom of the amp.

Data:

- Power: 60W RMS.
- 1 x Speaker Celestion Vintage 30
- Impedance: 8 ohm or 16 ohm.
- Input: 2 - connected in a parallel.
- A possibility of fixing wheels.
- Dimensions (width x depth x height): 495 x 270 x 465



Mr.Hector Cabinet Series

Mr.Hector

Cabinet Series - 312

Cabinet 3 x 12" is on two Celestion Vintage 30 speakers and one Electro Voice "Black Label". Many tests and trials have shown that such a combination of speakers makes a very specific sound, which creates a perfect combination with High Gain amplifiers, but it also suits well with classical constructions of guitar amplifiers. Cabinet made from plywood.

Data:

- Power: 240W RMS.
- 2 x Speaker Celestion Vintage 30
- 1 x Speaker Electro Voice „Black Label”.
- Impedance: 16 ohm
- Input: 2 - connected in a parallel.
- A possibility of fixing wheels.
- Dimensions (width x depth x height): 750 x 750 x 350

Mr.Hector

Cabinet Series - 212

Cabinet 2 x 12" is on one Celestion Vintage 30 speaker and one Electro Voice "Black Label". It is a closed structure with its back fixed on screws. There is a hole at the back wall, which influences the low frequencies. Additionally the width of the cabinet is the same as in the 412 model, what makes it possible to use as a bottom of 412 + 212 set. In this case no amp will stand out of it. Cabinet made from plywood.

Data:

- Power: 120W RMS.
- 1 x Speaker Celestion Vintage 30
- 1 x Speaker Electro Voice „Black Label”.
- Impedance: 16 ohm
- Input: 2 - connected in a parallel.
- A possibility of fixing wheels.
- Dimensions (width x depth x height): 750 x 352 x 440





412A & 412B

Cabinet 4 x 12" is on four Celestion Vintage 30 speakers in configuration „A“ - slanted cabinet and „B“ - straight cabinet. Celestion Vintage speakers 30 are thought to be the best guitar speakers. The cabinet has the classical closed back, which is fixed on screws. The speakers are fixed at the back. The structure is available in three types - see below.

Data :

- Power: 240 W RMS.
- Impedance: 8 ohm or 16 ohm.
- Output: 2 - connected in a parallel.
- A possibility of fixing wheels .
- Dimensions (width x deph x height): 750 x 750 x 350.

Available types:

- STANDARD - made from particle board, which has a soft and longer lasting bass.
- CLASSIC - made from plywood, which causes that the sound is more dry, but there is a very quick and clear bass.
- PREMIUM - a combination of particle board and plywood. This structure is the result of years of experience in constructing guitar cabinets. Such combination is kind of a compromise between Classic and Standard types.

212S

Cabinet 2 x 12" in on two Celestion Vintage 30 speakers. The cabinet has the classical closed back, which is fixed on screws. The speakers are fixed at the back. The structure is available in three types - see below.

Data :

- Power: 120W RMS.
- Impedance: 4 ohm, 8 ohm or 16 ohm.
- Output: 2 - connected in a parallel.
- A possibility of fixing wheels .
- Dimensions (width x deph x height): 670 x 520 x 310

Available types:

- STANDARD - made from particle board, which has a soft and longer lasting bass.
- CLASSIC - made from plywood, which causes that the sound is more dry, but there is a very quick and clear bass.
- PREMIUM - a combination of particle board and plywood. This structure is the result of years of experience in constructing guitar cabinets. Such combination is kind of a compromise between Classic and Standard types.

212F

Wider version of 2 x 12" cabinet on two Celestion Vintage 30 speakers. . The cabinet has the classical closed back, which is fixed on screws. The speakers are fixed at the back. The structure is available in three types - see below. Additionally the width of the cabinet is the same as in the 412 model. what makes it possible to use as a bottom of 412 + 212 set. In this case no amp will stand out of it.

Data :

- Power: 120W RMS.
- Impedance: 4 ohm, 8 ohm or 16 ohm.
- Output: 2 - connected in a parallel.
- A possibility of fixing wheels
- Dimensions (width x deph x height): 750 x 520 x 350

Available types:

- STANDARD - made from particle board, which has a soft and longer lasting bass.
- CLASSIC - made from plywood, which causes that the sound is more dry, but there is a very quick and clear bass.
- PREMIUM - a combination of particle board and plywood. This structure is the result of years of experience in constructing guitar cabinets. Such combination is kind of a compromise between Classic and Standard types.



212SV & 212FV

Speaker cabinet model is marked as 212V (Vented). It is the same type as 212, but here there is a hole at the back wall, which influences the low frequencies. Cabinet is on two Celestion Vintage 30.

Data :

- Power: 120W RMS.
- Impedance: 4 ohm, 8 ohm or 16 ohm.
- Output: 2 - connected in a parallel.
- A possibility of fixing wheels
- Dimensions 212FV (width x deph x height): 750 x 520 x 350
- Dimensions 212SV (width x deph x height): 670 x 520 x 310

Available types:

- STANDARD - made from particle board, which has a soft and longer lasting bass.
- CLASSIC - made from plywood, which causes that the sound is more dry, but there is a very quick and clear bass.
- PREMIUM - a combination of particle board and plywood. This structure is the result of years of experience in constructing guitar cabinets. Such combination is kind of a compromise between Classic and Standard types.



112 Black Label

Cabinet 1 x 12" is on Electro Voice - Black Label speaker. It is a closed structure with its back fixed on screws. There is a hole at the back wall, which influences the low frequencies. Additionally the width of the cabinet is the same as in the 412 model, what makes it possible to use as a bottom of 412 + 212 set. In this case no amp will stand out of it. Cabinet made from plywood.

Data:

- Power: 300W RMS.
- Impedance: 8 ohm.
- Output: 2 - connected in a parallel.
- A possibility of fixing wheels
- Dimensions (width x deph x height): 750 x 352 x 440





Way of Sound

Way of Sound cables are hand made to all the instruments, such as electric guitars, bass guitars, electro-acoustic guitars, those being connected with all amplifiers, effects, etc. All of them are under two - year guarantee*

Connectors are made in the direction shown on the plug. These connectors are produced in various configurations of length and kind of plugs - right-angle plugs and straight plugs. We use materials of the best quality. The lead is made to our special order. It is made from oxygen-free copper and silver. It has spiral wound screen thanks to which there is nothing like microphonic effect and there is a high efficiency of screening. As a result, the hum is not audible even under extreme working conditions.

Thanks to such solutions the cable has little capacity and attenuation. Additionally, the outer cable sheathing is made from the material which prevents the cable from twisting and which increases resistance to bending. Nevertheless, cable protection has been used in the fragile place - connection with the plug. It has been a considerable improvement in the cable lifetime.

Each cable is supplied with a special fastening tape to enable the cable to be uncoiled without kinking or knotting. The diameter of the cable is 7 mm.

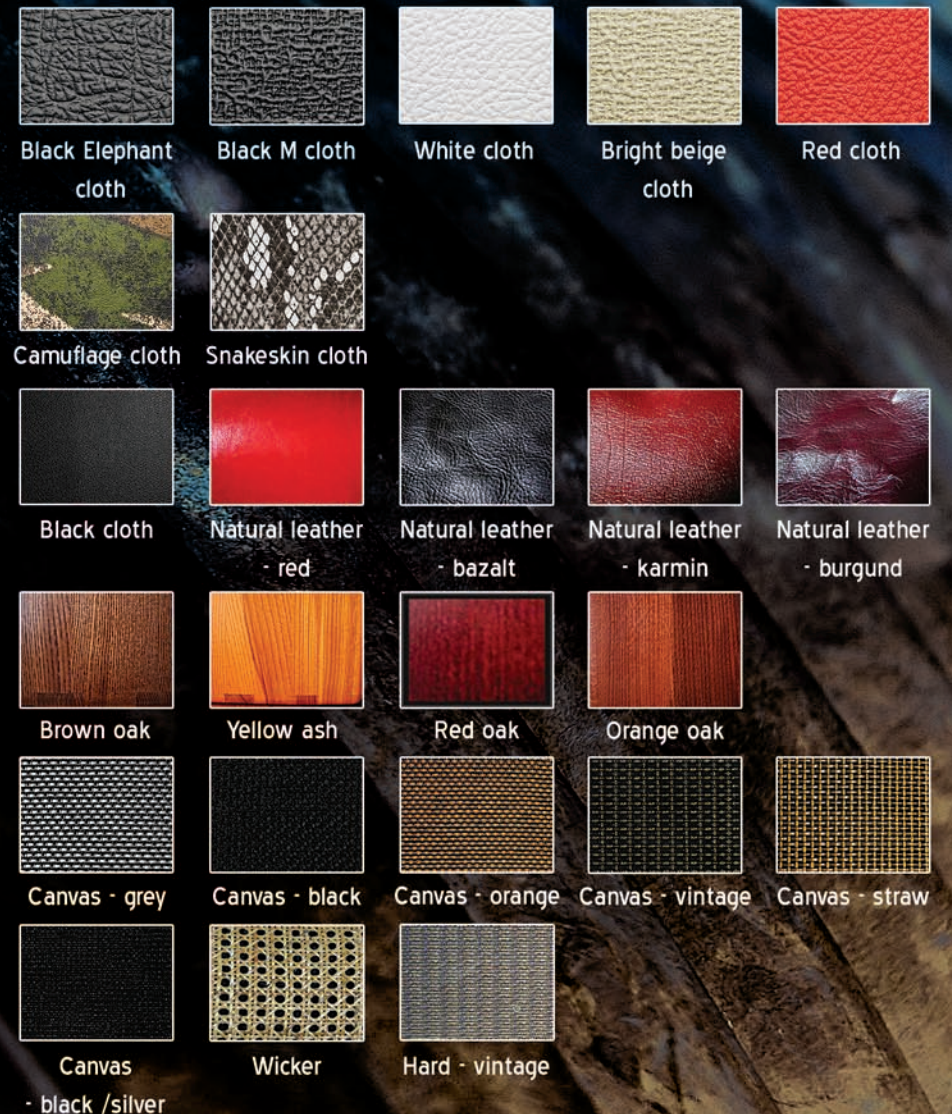
* guarantee does not include the damages caused by inappropriate usage, mechanical damages or any kind of modifications.



Laboga custom



Outfit options



Laboga Cables

Users:



Tommy Emmanuel



Al Di Meola